

PLEASE CHECK WWW.MOLEX.COM FOR LATEST PART INFORMATION

Part Number: [0399400309](#)
Status: **Active**
Description: 5.08mm (.200") Pitch Beau™ EuroMate™ Pluggable PCB Terminal Block, Dual Level, 270° Wire Entry, 9 Circuits

Documents:

[Drawing \(PDF\)](#) [RoHS Certificate of Compliance \(PDF\)](#)
[Product Specification PS-39940-001 \(PDF\)](#)

Agency Certification

UL E48521

General

Product Family Terminal Blocks
 Series [39940](#)
 Application Wire-to-Board
 Comments Gold plating available
 Component Type Plug
 Product Literature Order No USA-264
 Product Name EuroMate™ Pluggable
 Type Euro Block

Physical

Circuits (Loaded) 9
 Color - Resin Black
 Entry Angle Horizontal
 Flammability 94V-0
 Lock to Mating Part None
 Material - Resin Nylon
 Number of Rows 2
 Orientation Vertical
 Panel Mount No
 Pitch - Mating Interface (in) 0.200 In
 Pitch - Mating Interface (mm) 5.08 mm
 Polarized to Mating Part Yes
 Stackable No
 Temperature Range - Operating 130°C
 Termination Interface: Style Screw or Lug
 Wire Size AWG 12, 14, 16, 18, 20, 22
 Wire Size mm² 0.50 - 2.50

Electrical

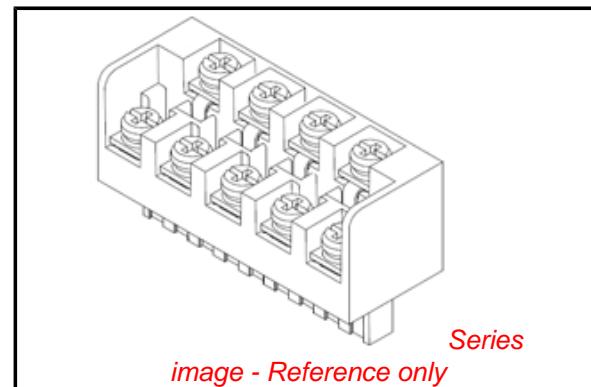
Current - Maximum per Contact 15A
 Voltage - Maximum 300V

Material Info

Old Part Number 940909

Reference - Drawing Numbers

Product Specification PS-39940-001
 Sales Drawing SD-39940-005



EU RoHS

ELV and RoHS
Compliant
REACH SVHC
 Not Reviewed
Halogen-Free
Status
Not Reviewed

China RoHS



Need more information on product environmental compliance?

Email productcompliance@molex.com
 For a multiple part number RoHS Certificate of Compliance, [click here](#)

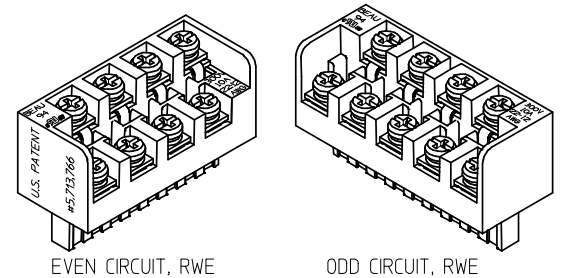
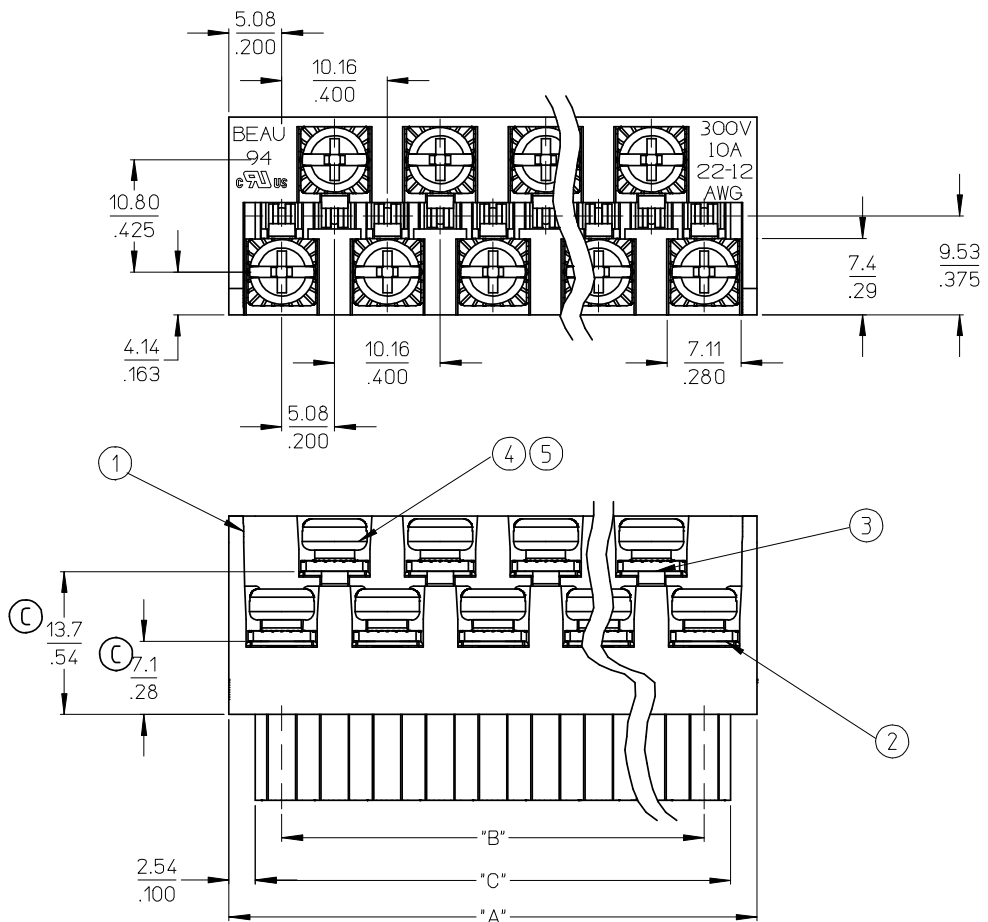
Please visit the [Contact Us](#) section for any non-product compliance questions.

Search Parts in this Series

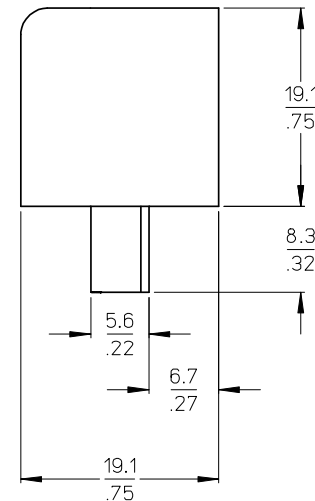
[39940Series](#)

Mates With

[39531-0009](#) , [39531-1009](#) , [39532-0009](#) , [39532-1009](#)



AUXILIARY VIEWS
SCALE 1:1



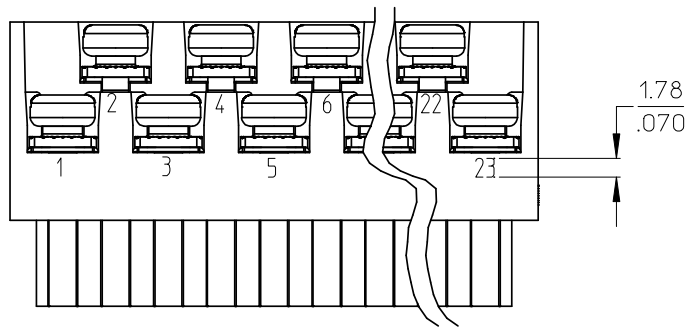
- NOTES:
1. MATERIAL: SEE TABLE
 2. FINISHES: SEE TABLE
 3. PRODUCT SPECIFICATION: NOT REQUIRED
 4. PACKAGING: NOT REQUIRED
 5. MATES WITH: MOST 5.08 (.200) PIN HEADERS
 6. "XX" REFERS TO THE QUANTITY OF CIRCUITS
 7. ROHS COMPLIANT

ODD CIRCUIT CONFIGURATION SHOWN

| | | | | | |
|------|-----------------------------------|----------------------------------|-------------------------|---------------|---------------|
| 5 | XX | XX | SCREW, M3.5 X .280 | STEEL | ZINC CHROMATE |
| 4 | XX | XX | NUT, M3.5, HEX | STEEL | ZINC CHROMATE |
| 3 | XX/2 | (XX-1)/2 | REAR ROW TERM. (LONG) | PHOS. BRONZE | HOT TIN DIP |
| 2 | XX/2 | (XX+1)/2 | FRONT ROW TERM. (SHORT) | PHOS. BRONZE | HOT TIN DIP |
| 1 | 1 | 1 | BARRIER | THERMOPLASTIC | BLACK |
| ITEM | QTY. (EVEN NO. OF CIRCUITS) | QTY. (ODD NO. OF CIRCUITS) | DESCRIPTION | MATERIAL | FINISH |

| | | | | | | | | | | | | |
|--|---|--|---|--|----------------------------------|--|--------------------|--|---|--|------------------------|--|
| REVISED & REDRAWN EC NO: WNA2008-0391 DRWN: JENC INAS 2008/07/01 CH'KD: CYORK 2008/07/02 APPR: JMACNEIL 2008/07/07 REV DESCRIPTION | QUALITY SYMBOLS ▽=0 ▽=0 | | GENERAL TOLERANCES (UNLESS SPECIFIED) | | DIMENSION STYLE MM/IN | | SCALE 2:1 | | DESIGN UNITS INCH | | THIRD ANGLE PROJECTION | |
| | 4 PLACES ± --- ± --- 3 PLACES ± --- ± .005 2 PLACES ± 0.13 ± .01 1 PLACE ± 0.3 ± --- | | ANGULAR ± 2 ° | | DRAWN BY J. FARMER 2004/12/03 | | DATE 2004/12/03 | | TITLE 5.08/.200 PLUG ASSY, FWE WITH CLOSED ENDS (9409XX) | | | |
| | DRAFT WHERE APPLICABLE MUST REMAIN WITHIN DIMENSIONS | | MATERIAL NO. SEE SHEET 2 | | APPROVED BY GHR 2004/12/03 | | DATE 2004/12/03 | | MOLEX INCORPORATED | | SHEET NO. 1 OF 2 | |
| | SIZE B | | THIS DRAWING CONTAINS INFORMATION THAT IS PROPRIETARY TO MOLEX INCORPORATED AND SHOULD NOT BE USED WITHOUT WRITTEN PERMISSION | | | | | | | | | |

| NO. OF CIRC. "XX" | "A" DIM. | "B" DIM. | "C" ^{+0.00} _{-.25} [^{+0.000} _{-.010}] | MATERIAL NO. (STANDARD) |
|-------------------|--------------|----------------|---|-------------------------|
| 03 | 20.3 [.80] | 10.16 [.400] | 15.2 [.60] | 399400303 |
| 04 | 25.4 [1.00] | 15.24 [.600] | 20.3 [.80] | 399400304 |
| 05 | 30.5 [1.20] | 20.32 [.800] | 25.4 [1.00] | 399400305 |
| 06 | 35.6 [1.40] | 25.40 [1.000] | 30.5 [1.20] | 399400306 |
| 07 | 40.6 [1.60] | 30.48 [1.200] | 35.6 [1.40] | 399400307 |
| 08 | 45.7 [1.80] | 35.56 [1.400] | 40.6 [1.60] | 399400308 |
| 09 | 50.8 [2.00] | 40.64 [1.600] | 45.7 [1.80] | 399400309 |
| 10 | 55.9 [2.20] | 45.72 [1.800] | 50.8 [2.00] | 399400310 |
| 11 | 61.0 [2.40] | 50.80 [2.000] | 55.9 [2.20] | 399400311 |
| 12 | 66.0 [2.60] | 55.88 [2.200] | 61.0 [2.40] | 399400312 |
| 13 | 71.1 [2.80] | 60.96 [2.400] | 66.0 [2.60] | 399400313 |
| 14 | 76.2 [3.00] | 66.04 [2.600] | 71.1 [2.80] | 399400314 |
| 15 | 81.3 [3.20] | 71.12 [2.800] | 76.2 [3.00] | 399400315 |
| 16 | 86.4 [3.40] | 76.20 [3.000] | 81.3 [3.20] | 399400316 |
| 17 | 91.4 [3.60] | 81.28 [3.200] | 86.4 [3.40] | 399400317 |
| 18 | 96.5 [3.80] | 86.36 [3.400] | 91.4 [3.60] | 399400318 |
| 19 | 101.6 [4.00] | 91.44 [3.600] | 96.5 [3.80] | 399400319 |
| 20 | 106.7 [4.20] | 96.52 [3.800] | 101.6 [4.00] | 399400320 |
| 21 | 111.8 [4.40] | 101.60 [4.000] | 106.7 [4.20] | 399400321 |
| 22 | 116.9 [4.60] | 106.68 [4.200] | 111.8 [4.40] | 399400322 |
| 23 | 121.9 [4.80] | 111.76 [4.400] | 116.8 [4.60] | 399400323 |
| 24 | 127.0 [5.00] | 116.84 [4.600] | 121.9 [4.80] | 399400324 |



OPTIONAL
10A IMPRINTING
(ODD CIRCUIT CONFIGURATION SHOWN)

| | | | | | | | | |
|---|--|--|---------|--------------------------|--------------------|---|------------------------------|---------------------|
| SEE SHEET ONE EEC NO: WNA2008-0391 DRWN: JENCINAS 2008/07/01 CHKD: CYORK 2008/07/02 APPR: JMACNEIL 2008/07/07 | REV DESCRIPTION 0 QUALITY SYMBOLS 1 = 0 2 = 0 | GENERAL TOLERANCES (UNLESS SPECIFIED) | | DIMENSION STYLE MM/IN | SCALE 2:1 | DESIGN UNITS INCH | THIRD ANGLE PROJECTION | |
| | | 4 PLACES ± --- ± --- | mm INCH | DRAWN BY J. FARMER | DATE 2004/12/03 | TITLE 5.08/.200 PLUG ASSY, FWE WITH CLOSED ENDS (9409XX) | | |
| | | 3 PLACES ± --- ± .005 | | CHECKED BY R. KEMP | DATE 2004/12/03 | MOLEX INCORPORATED | | |
| | | 2 PLACES ± 0.13 ± .01 | | APPROVED BY GHR | DATE 2004/12/03 | MATERIAL NO. SEE CHART | DOCUMENT NO. SD-39940-005 | SHEET NO. 2 OF 2 |
| | | 1 PLACE ± 0.3 ± --- | | ANGULAR ± 2 ° | | THIS DRAWING CONTAINS INFORMATION THAT IS PROPRIETARY TO MOLEX INCORPORATED AND SHOULD NOT BE USED WITHOUT WRITTEN PERMISSION | | |
| | | DRAFT WHERE APPLICABLE MUST REMAIN WITHIN DIMENSIONS | | | | | | |